



Mind Map of the Hoof

Context: The discussion activity today is building a Mind Map.

A **Mind Map** is a way to brainstorm thoughts organically; allowing you to visually structure your ideas. This type of design helps with analysis and recall, and aids in understanding the relationships between the structures. Here is a resource to learn more about Mind Maps: [Mind Map information and examples](#).

Instructions: Use all of the resources available to you to be successful. Please work in groups of 4. Allow everyone in your group time and space to arrive at an answer, and ensure everyone is actively participating (no free rides). Use your collective time to support one another in an inclusive conversation.

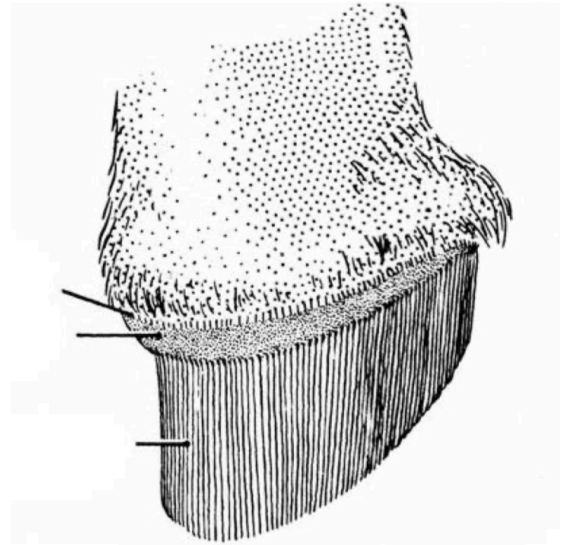
1. Use the images/text below, if needed, as a place to start.
2. You are encouraged to use additional images or words to structure your thoughts.
3. Tailor your map to your learning styles.
4. Write your group members' names on the edge of the mind map (legible).
5. Each group member must upload a pdf/photo of your mind map into Canvas.

You must include all of the terms listed below in your Mind Map.

FOOT & HOOF STRUCTURES –

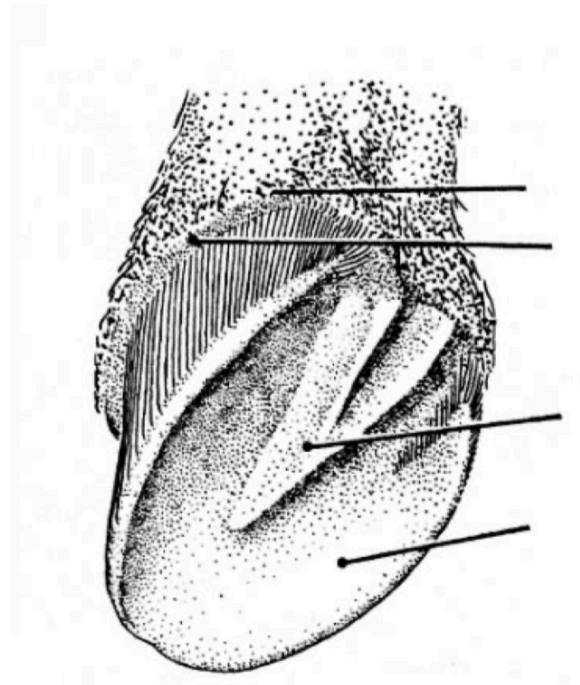
Epidermis

- ☐ Coronary groove
- ☐ Layers of the wall
 - ☐ Stratum externum
 - ☐ Periople
 - ☐ Stratum medium
 - ☐ Horn tubule
 - ☐ Intertubular horn
 - ☐ Stratum internum
 - ☐ Primary epidermal laminae
 - ☐ Secondary epidermal laminae
- ☐ Sole
- ☐ White line
- ☐ Frog
 - ☐ Heel bulbs



Dermis/Corium

- ☐ Perioplic corium
- ☐ Coronary corium
- ☐ Sole corium
- ☐ Frog corium
- ☐ Laminar corium
 - ☐ Primary dermal laminae
 - ☐ Secondary dermal laminae
- ☐ Basement membrane



Terms of Use:

Creative Commons License (BY-NC-SA)

This license enables re-users to distribute, remix, adapt, and build upon the material in any medium or format for noncommercial purposes only, and only so long as attribution is given to the original creator(s). If you remix, adapt, or build upon the material, you must license the modified material under identical terms. CC BY-NC-SA includes the following elements:

BY: credit must be given to the original creator(s).

NC: Only noncommercial uses of the work are permitted.

SA: Adaptations must be shared under the same terms.
